



BRICK VENEERS



**70 & 90 SERIES
BRICK RANGES**

VERSION 3 | WWW.BOWERSBROTHERS.CO.NZ



ABOUT BOWERS MASONRY

Bowers Brothers Concrete are a family owned concrete manufacturing company that has been in the business for over 90 years.

In that time we have established six branches throughout the Waikato including a distribution yard in Auckland. We have supply agreements with leading Building and Landscaping Merchants throughout the North Island.

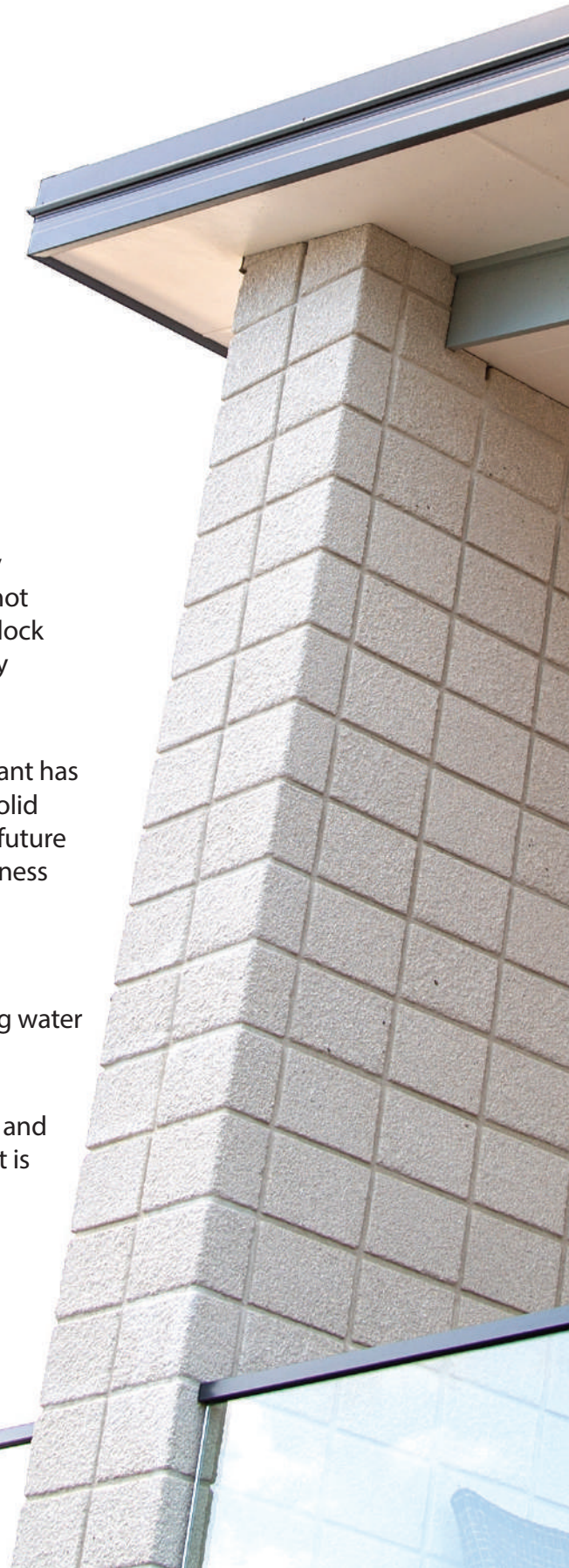
Our Horotiu and Morrinsville masonry plants manufacture masonry blocks, bricks, paving, and retaining wall products which are produced in a variety of colours including white, and can be plain finished, shot blasted or honed. With our state-of-the-art Columbia block machines we strive to produce consistently high quality masonry products.

From January 2022 the Bowers Morrinsville Masonry Plant has been converted to run on solar power. Bowers have a solid commitment to reducing our carbon footprint, having future plans for using more renewable energy within our business model.

BOWERS MASONRY BRICK VENEER

Bricks have been a tried and trusted solution to building water tight homes for generations of New Zealand families.

The Bowers Masonry Brick Veneer range enhances this, and gives it a striking bold appearance. A beautiful look that is solid, durable and timeless.



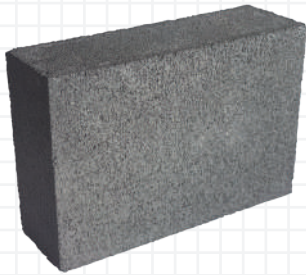


BRICK VENEER COLOUR RANGE

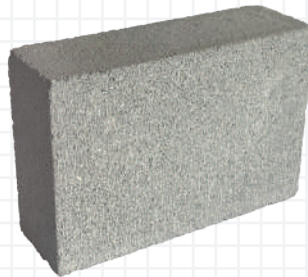
STANDARD COLOURS

New Zealand's Best Kept Secret!

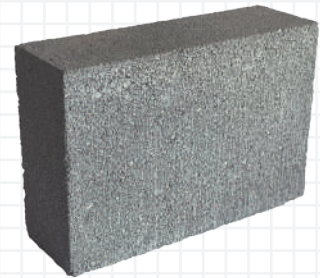
Who would have thought the humble brick could be so attractive, versatile, and affordable? Bowers Brothers have taken bricks to another level.



IRONSANDS
STANDARD COLOUR



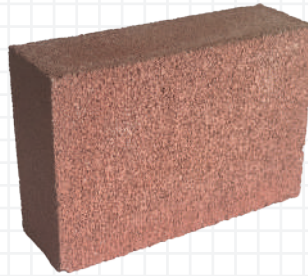
MIST
STANDARD COLOUR



PEWTER
STANDARD COLOUR



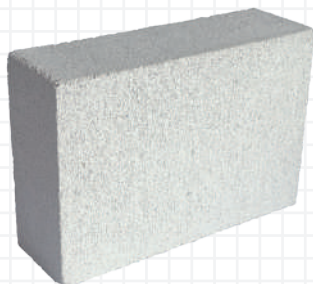
TEA
STANDARD COLOUR



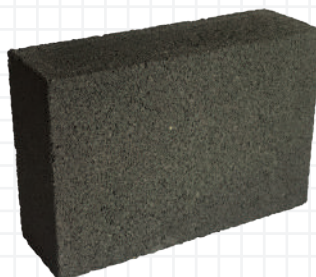
RED
STANDARD COLOUR

NOTE Colours shown may alter, due to the limitation of the colour printing process of this brochure.

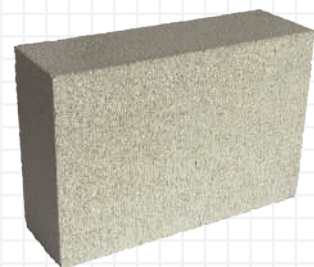
PREMIUM COLOURS



ICE
PREMIUM COLOUR



MIDNIGHT
PREMIUM COLOUR

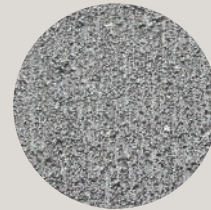


ANTIQUE CREAM
PREMIUM COLOUR



Standard Brick
Stack Bond
Colour: Ice
Shot Blasted

FINISHES



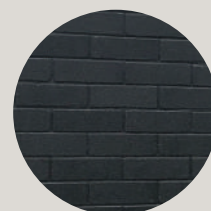
FAIR FACED
Smooth surface.



SHOT BLASTED
This gives a rough exposed face to the product.
Made to order.



HONED
Polished brick. Honed bricks are a made to order product.
Honed on site.



PAINTED
Painted brick on site.

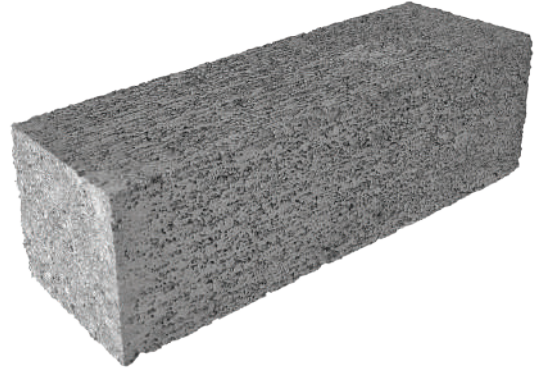
NOTE Colours shown may alter, due to the limitation of the colour printing process of this brochure.

CLASSIC BRICK

A timeless brick whose smaller proportions are unique to Bowers Brothers. This brick takes on a whole new contemporary feel when manufactured in our Bowers ICE colour which is a stock item.

Seven other beautiful colours are available, made to order.

70 SERIES



COLOUR RANGE

AVAILABLE



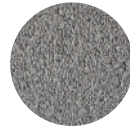
ICE



PAINT GRADE

NOTE: Midnight, Ice and Antique Cream are Premium Colours.

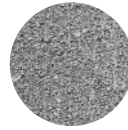
MADE-TO-ORDER COLOURS



IRONSANDS



MIDNIGHT



PEWTER



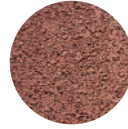
ANTIQUE CREAM



TEA



MIST



RED

SPECIFICATIONS

230mm L x 70mm W x 76mm H
48m² | 552 per pallet

BEST FOR



Residential



Commercial

NOTE Colours shown may alter, due to the limitation of the colour printing process of this catalogue.

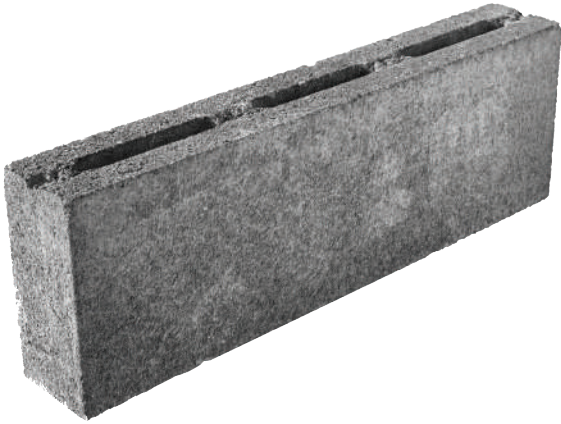


PLATEAU BRICK

70 SERIES

A favourite with architects and designers, the Plateau Brick's unique dimensions create a striking bold impression when specified in Bowers stock item colour ICE or one of seven other MTO colours.

The Plateau Brick is also made with solid bricks, which are ideal to be used as corners and sills on your project.



COLOUR RANGE

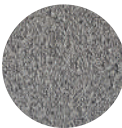
AVAILABLE



ICE

NOTE: Midnight, Ice and Antique Cream are Premium Colours.

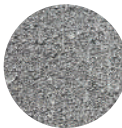
MADE-TO-ORDER COLOURS



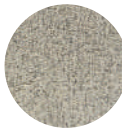
IRONSANDS



MIDNIGHT



PEWTER



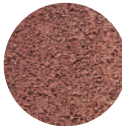
ANTIQUE CREAM



TEA



MIST



RED

SPECIFICATIONS

450mm L x 70mm W x 150mm H
13.6m² | 168 per pallet

BEST FOR

- Residential
- Commercial

NOTE Colours shown may alter, due to the limitation of the colour printing process of this catalogue.



STANDARD BRICK

Pleasing proportions make this brick ever-popular with home-owners. It has an enduring charm and can be customised with colour selection. The versatile size of this 70 series brick is ideal to create a traditional or contemporary style by simply adjusting the laying pattern.

Pair the Standard Brick with our unique Standard Corner Brick to create statement pillars and clean corners.

70 SERIES



COLOUR RANGE

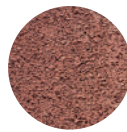
STANDARD COLOURS



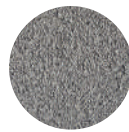
TEA



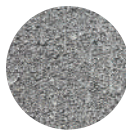
MIST



RED



IRONSANDS

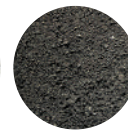


PEWTER

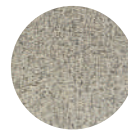
PREMIUM COLOURS



ICE



MIDNIGHT



ANTIQUÉ
CREAM

SPECIFICATIONS

220mm L x 70mm W x 150mm H
27.2m² | 336 per pallet

BEST FOR

- ✓ Residential
- ✓ Commercial

NOTE Colours shown may alter, due to the limitation of the colour printing process of this catalogue.



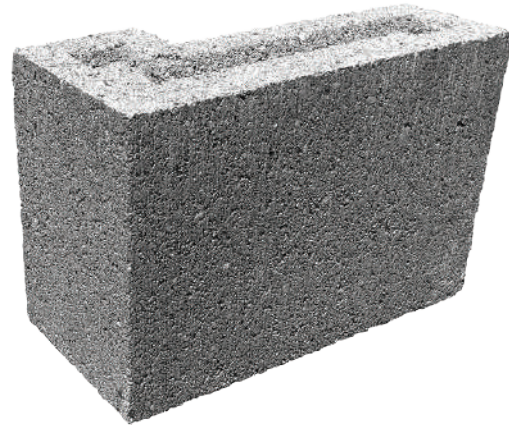
STANDARD CORNER BRICK

The only 90 degree corner brick available in New Zealand!

Blockies love this brick for ease of laying and street appeal with tidy cornering detail. Manufacturing of Standard Bricks and Standard Corner Bricks are done at the same time ensuring there is no colour variation.

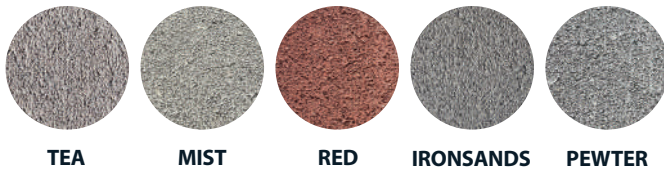
Save time and money laying bricks in less time with no cutting corners!

70 SERIES



COLOUR RANGE

STANDARD COLOURS



TEA

MIST

RED

IRONSANDS

PEWTER

PREMIUM COLOURS



ICE

MIDNIGHT

ANTIQUE CREAM

SPECIFICATIONS

220mm L x 70mm W x 150mm H
280 per pallet

BEST FOR

- Residential
- Commercial

NOTE Colours shown may alter, due to the limitation of the colour printing process of this catalogue.



H10.01 STANDARD HALF HIGH BRICK

90 SERIES

Very modern and attractive, this Standard Half High Brick can be laid in a feature wall, as a soldier course or as a solid cladding. With the 90 Series dimensions this brick creates an enduring, timeless appearance.



Available in eight made to order colours.

The Standard Half High Brick is also made with solid bricks, which are ideal to be used as corners and sills on your project.

MADE-TO-ORDER COLOUR RANGE

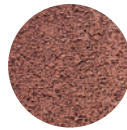
STANDARD COLOURS



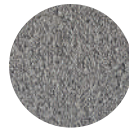
TEA



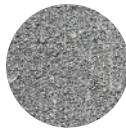
MIST



RED



IRONSANDS

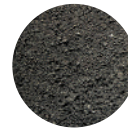


PEWTER

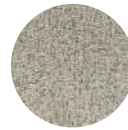
PREMIUM COLOURS



ICE



MIDNIGHT



ANTIQUE CREAM

SPECIFICATIONS

390mm L x 90mm W x 90mm H
25m² | 300 per pallet

BEST FOR

- Residential
- Commercial

NOTE Colours shown may alter, due to the limitation of the colour printing process of this catalogue.

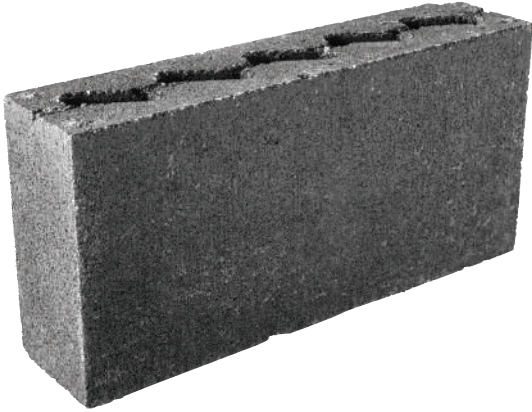


CADRONA BRICK

90 SERIES

This brick is the same proportions as a 10 Series Masonry Block veneer. It is particularly appealing in our attractive stock item colour Bowers Midnight. Consider laying it in a stack-bond laying pattern for a modern, architectural look.

The Cadrona Brick is also made with solid bricks, which are ideal to be used as corners and sills on your project.



COLOUR RANGE

AVAILABLE



MIDNIGHT

NOTE: Midnight, Ice and Antique Cream are Premium Colours.

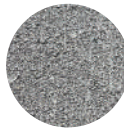
MADE-TO-ORDER COLOURS



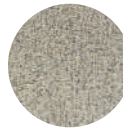
IRONSANDS



ICE



PEWTER



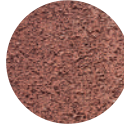
ANTIQUÉ CREAM



TEA



MIST



RED

SPECIFICATIONS

390mm L x 90mm W x 190mm H
12.5m² | 150 per pallet

BEST FOR

- Residential
- Commercial

NOTE Colours shown may alter, due to the limitation of the colour printing process of this catalogue.





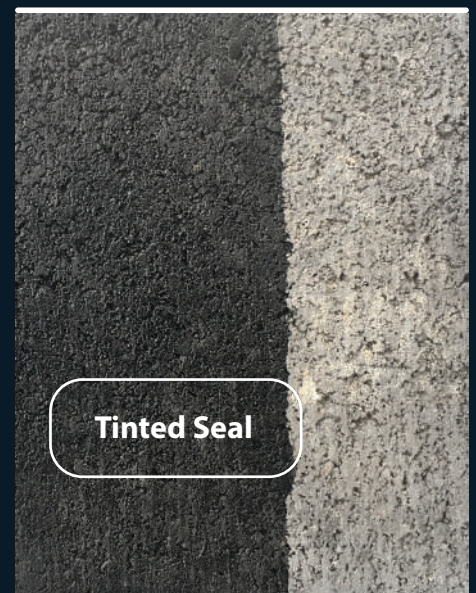
SEALING

As with all masonry products, to enhance the life and durability of the product we recommend the use of a suitable exterior clear sealer.

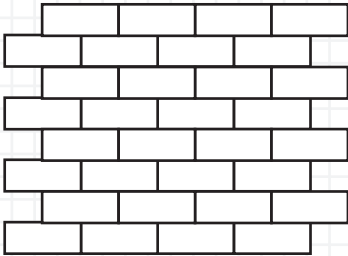
Midnight and Ironsands bricks must be sealed to prevent fading, reduce the chance of efflorescence and enhance the appearance. The use of a tinted sealer will give an even greater depth of colour to black bricks.

Seal brickwork as soon as possible as per suppliers recommendations. Any efflorescence should be removed before sealing.

Refer to the Technical Information Page in the Resources Section, on our website for application details.

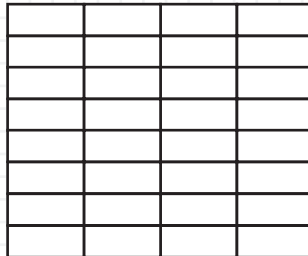


LAYING PATTERNS



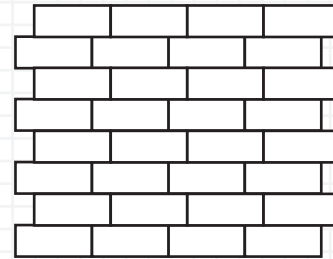
RUNNING BOND

Running Bond is the most simple and common pattern used with our brick veneers options.



STACK BOND

Stack Bond is outside the scope of NZS 3604 & NZS 4229 and requires specific design. (5.5 Veneer - Stack Bond) Information to guide engineers at; www.nzcma.org.nz/masonry-manual.aspx



THREE QUARTER RUNNING BOND

Three quarter Running Bond is achieved by using the plateau brick in conjunction with the standard brick corner.

MORTAR

Bowers recommends colour matching your mortar to your brick colour.

Using a dark colour mortar with a light colour brick or light colour mortar with a dark brick will cause the mortar to:

- Colour bleed into the brick and will highlight any imperfections in the veneer or the laying.
- Cause staining, giving the brick a patchy dirty look.

For example:

Premium white mortar looks best with the Ice coloured bricks and a black mortar needs to be used with Midnight or Ironsands coloured bricks.

The bricklayer must regularly sponge off thoroughly with clean water to prevent the mortar staining the surface of the bricks.



INFORMATION

BRICK VENEERS

As masonry brick veneers are manufactured using natural products, some variation in the shade/colour, texture and size tolerations should be expected.

Texture can be open and porous looking to smooth and slick looking across the same batch. This is just a natural occurrence in the manufacturing process.

Unusual discolouration patterns can be limited by blending the bricks. Should there be any concern regarding significant colour variation, laying should cease and the manufacturer contacted.

Bowers Midnight and Ironsands bricks, should be dry cut by the bricklayer to avoid slurry staining from a wet cut. These variations make up part of the inherent beauty of brick.

Brick veneers for each job should come out of the same batch and you should blend vertically from at least three pallets to blend colour and texture variations. A bricklayer should regularly step back and view the laid product from a distance of 6.1 m, to check the blending is acceptable.

A "Batch" is deemed to be:

- From which plant, it is manufactured &
- The date of manufacture. (this may be over consecutive days due to manufacturing limitations).

It is advised that you check the batch details on all pallets prior to commencing installation in case there has been a loading error from the yard or your supplier. It is easier to remedy any issues before the work has commenced.

It is also advised that you keep a copy of the batch details in case you run short of product. During transportation bricks may rub together on the pallet. This can sometimes cause light

rubbing on the face of the bricks. Excessively rubbed bricks should be discarded or used for cuts.

Be selective when laying the brick veneers - put damaged or chipped bricks to one side and do not lay them in highly visible areas i.e. near the front door.

Chips of varying sizes may be evident on the edges and corners of the bricks. Complete product breakage may also occur during cartage, especially on long distance haulage or during unloading. These are an unavoidable part of distributing and manufacturing any masonry product. Minor cracks and chips can occur but are not recognised as brick defects.

Due to the nature of bricks no two bricks are the same and no brick is perfect when examined close-up.

ASTM C90 has been adopted as the industry standard for viewing brickwork from an aesthetic standpoint - a workmanship quality standard is achieved if imperfections, including chips, are not visible when viewed from a distance, of not less than 6.1 m under diffused light as per ASTM C90.

ASTM C216-04 specifies that bricks must contain less than 5% visible cracking when viewed from a distance of 6.1m.

ASTM C216-15 for a general-purpose face brick (FBS textured) basically has the following requirements:

- Chips from the edge should not be deeper than 8mm
- Corner chips should not be deeper than 13mm.

When all the length of the chips is added up, that the total does not exceed 10% of the perimeter of the brick face (as an example, the accumulative lengths of the chips for a 230mm x 75mm brick shall not exceed 61 mm).

It is important to discuss with your bricklayer the aesthetic look you are hoping to achieve with your brick veneer and if possible, include them in your selection process.

We strongly advise that all parties involved in the construction process (builder, brick layer & client) are made aware of and have read the Brick & Block Layers Federation of New Zealand, Brick Veneer Best Practice Guide. <http://www.bbfnz.co.nz/building-with-brick/brick-veneer-best-practice-guide>

Product laid is deemed to be product accepted.

EFFLORESCENCE

Efflorescence is generally a “whitening” look on the surface of the brick veneer. It can vary in appearance from a thin hazy layer which is sometimes confused as surface fading to a thick calcified white crust. It is a common phenomenon experienced in a variety of degrees by all forms of product that has cement and should be anticipated on any job.

Efflorescence occurs where excessive amounts of water enters a veneer that has soluble salts present. When the water evaporates, the salts are then deposited on the surface of the veneer. Soluble salts can enter the veneer from various sources:

- Mortar components, particularly cement.
- Soil or fill in contact with the wall.
- Sea spray in coastal areas.

We recommend that Veneer walls should be protected or covered from inclement weather during the construction process to avoid the walls being saturated as this will promote efflorescence.

Persistent efflorescence may act as a warning sign that water is entering the wall through faulty copings, flashings or pipes.

Why do we get Efflorescence?

When the cement reacts with water Calcium Hydroxide is formed. The Calcium Hydroxide migrates to the surface of the brick through capillary action and forms Calcium Carbonate when it encounters Carbon Dioxide. The insoluble Calcium Carbonate is essentially limestone.

Cleaning Efflorescence

The initial appearance of efflorescence (Primary) can be scrubbed off with a stiff plastic brush and some detergent whilst it is still in its powdered form.

An alternative dry method is to brush the efflorescence loose and vacuum the deposit off and out of the pores.

If efflorescence is left on the wall for a period of time and is allowed to calcify (Secondary), it is extremely difficult to remove.

To remove Secondary efflorescence, will require an acid wash or Green Acid “Guard it” and should be done by a professional following the supplier’s recommendations.

Extracts are from www.bbfnz.co.nz “Brick Veneer Best Practice Guide”


RECOMMENDATIONS

We recommend that this product is installed by a Licensed Building Practitioner, qualified in Brick & Block Laying in accordance with NZS 4210. We recommend the use of Control Joints.

Refer to our full technical data sheet for more information.

Design DWG's are available on our website.



 0800 207 374

 sales@bowersbrothers.co.nz

 www.bowersbrothers.co.nz

Bowers Brothers Concrete Ltd
51 Lorne Street, Morrinsville, New Zealand 3300

NZ MADE MASONRY
Blocks | Bricks | Paving | Retaining

